

# **USB 2.0 Extender over Fiber/Cat5**

**(KFU201)**

## **User Manual**

[www.kinankvm.com](http://www.kinankvm.com)

@All right reserved Shenzhen Kinan Technology Co., Ltd.

Date: 2025/06

Version: V1.0

**Product Description**

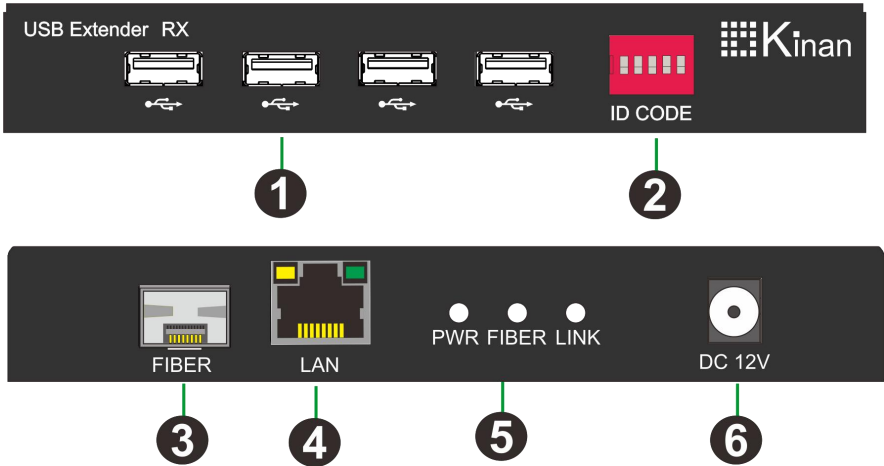
This USB extender can Supports signal transmission over fiber optic cable or Cat5 cable, it supports single-mode and multi-mode fiber module, the maximum transmission distance of single mode is 20km, for multimode the transmission distance is up to 300m. If you connect the with a Cat5 cable, the transmitting distance is up to 150m.

***\*Note: The bandwidth of the optical module must reach 1.25Gbit/sec.***

**Product Features**

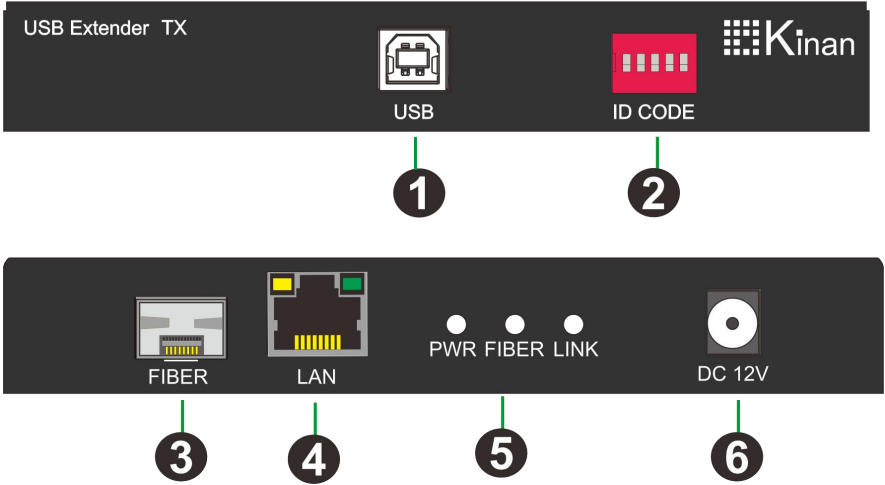
- Plug and play, no driver is required, and compatible with multiple operating systems.
- Support 1000M LAN port
- Support optical fiber transmission
- Supports USB 2.0, and USB 1.1 standards.
- USB transmission rate up to 480Mbit/s

**KFU201\_RX**



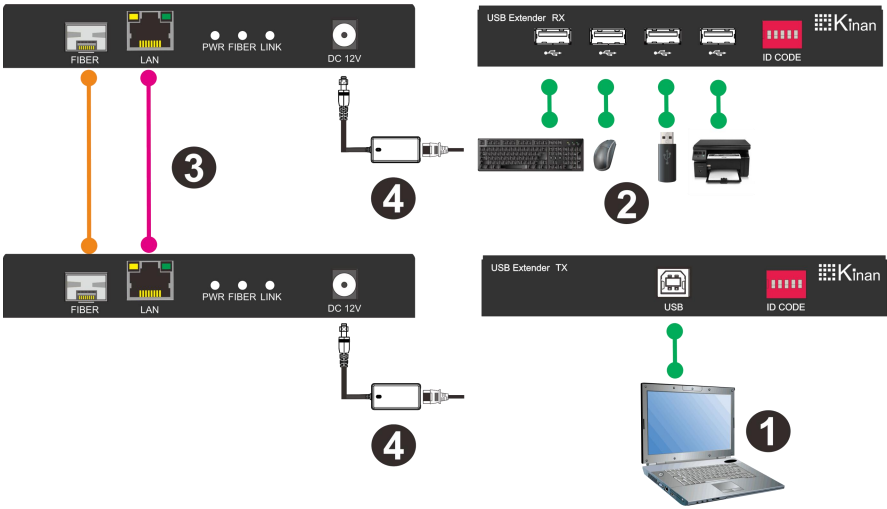
No.	Components		Description
1			Connect to USB peripherals
2	ID CODE		DIP switch for point-to-point DIP connection
3	FIBER		Optical port, plug this port with an SFP module
5	LED	FWR	Power indicator
		FIBER	FIBER Instructions
		LINK	Connection Instructions
6	DC 12V		12V power connection port

### KFU201\_TX



No.	Components		Description
1	USB		USB in
2	ID CODE		DIP switch for point-to-point DIP connection
3	FIBER		Optical port, plug this port with an SFP module
4	LAN		RJ45 port, plug this port with a CAT5E cable
5	LED	FWR	Power indicator
		FIBER	FIBER Instructions
		LINK	Connection Instructions
6	DC 12V		12V power connection port

### Connection Diagram



1. The transmitter (TX) is connected to USB interface of the PC (Figure ①).
  2. The receiver (RX) connects to the keyboard, mouse, USB peripheral devices (Figure ②).
  3. Connect the transmitter (TX) and receiver (RX) interfaces respectively through optical fiber or network cable (Figure ③)
- Note that the ID CODE switch keys on TX and RX must be in the same section.**
4. Connect the power cords to the transmitter and receiver respectively (Figure ④)

**Specifications**

Model		KFU201_TX	KFU201_RX
Interfaces	USB in	1	N/A
	USB out	N/A	4
	Power	12V	12V
	SFP	SFP	SFP
	LAN	RJ45	RJ45
Power Input		DC12V /2A	DC12V / 2A
Power Consumption		5W	5W
USB Standard		USB 2.0, and USB 1.1 standards	
Data Rate		480Mbit/s	
Operating Temperature		0–50 °C	
Storage Temperature		-20–60 °C	
Humidity		0–80% RH, Non-condensing	
Material		Metal	
Net Weight (kg)		0.4 kg	0.4kg
Product Dimension (W × D × H)		150mm x 100mm x23 mm	
Package Dimension (W × D × H)		395 mm x 274 mm x 110mm	