

## 32 port CAT5 KVM over IP Switch

### Product Introduction

The KC2132i KVM over IP switch is a control unit that allows you to control one or many computers locally at the server site or remotely via the Internet using a standard browser. It allows access and control up to 32 computers from a single console (keyboard, mouse, and monitor). As many as 1024 computers can be controlled from a single keyboard-mouse console by cascading to another 31 additional switches. The KVM switch supports USB connections for the console and computers, RJ-45 connectors and CAT 5e/6 cable are used to link to the computers.

### Product Feature

---

#### Hardware Features

- ◇ 1U Design-Occupies only 1U of the rack space
- ◇ Fit for standard 19" rack mounting
- ◇ Standard RJ-45 connector-Connect to a server or KVM switch via a standard RJ-45 connector with CAT 5e/6 cable

#### Cascade Features

- ◇ Directly access and control up to 32 servers with single KC2132i
- ◇ By cascading to 31 additional switches, as many as 1024 computers can be controlled from single KC2132i

#### Management Way

- ◇ Supports 1 remote user to access the KVM via network browser with TCP/IP communication protocol.
- ◇ Convenient computer switching via front panel LEDs, OSD menu and mouse
- ◇ Auto scan feature for monitoring user-selected computers
- ◇ Broadcast mode--operations simultaneously performed on all selected computers
- ◇ Remote access to the KVM(Keyboard, video and mouse) through modem
- ◇ Support any operating system even in BIOS level, during start up or in blue screen
- ◇ Supports JAVA browser remote control

#### High Resolution

- ◇ Local video resolution:1920x1440 @ 60Hz,remote video resolution:1440 x 1050 @ 60Hz
- ◇ Automatically adjust video resolution when switching between servers

#### Security

- ◇ Two level password security--only authorized users view and control computers; up to four users and an administrator with a separate profile for each
- ◇ All transmitting data are encrypted with SSL 256 bits
- ◇ SSL certificate management

#### Wide Compatibility

- ◇ Multi-platform Support-Compatible with Windows, Sun, Unix and Linux
- ◇ Supports server form Lenovo, HUA WEI, HP, IBM and Dell, etc.

## Product image

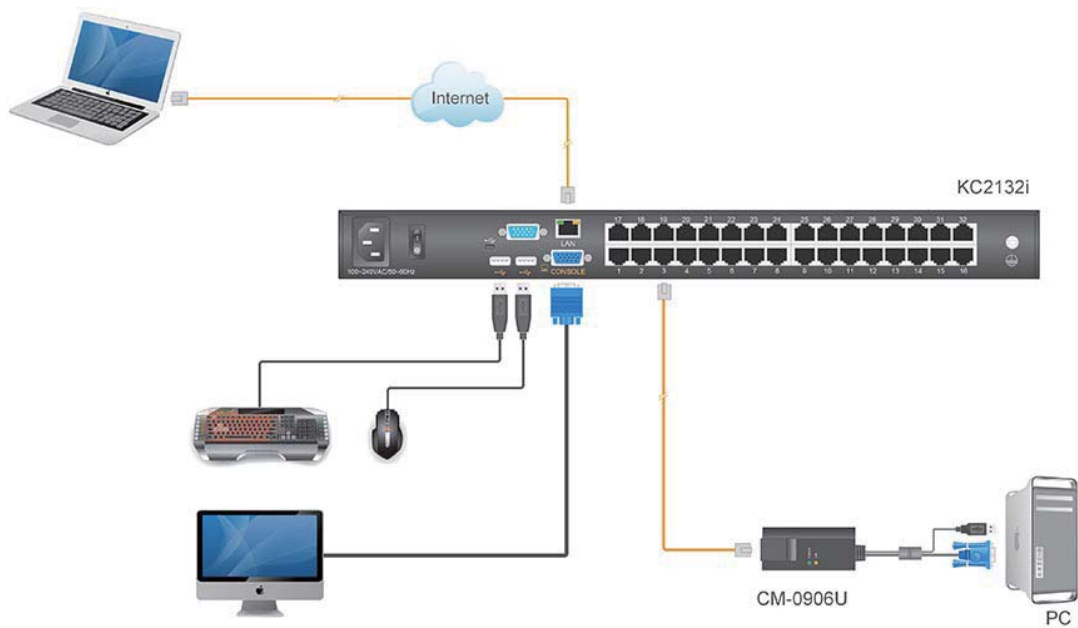
KC2132i back view



KC2132i front view



## Topological Diagram



## Optional Accessories



**Product Model:** KinAn CM-0906P

**Brief Introduction:** CM-0906P is module for CAT5 series, it is used for connecting KVM to PS/2 server, transmitting distance is up to 150m.



**Product Model:** KinAn CM-0906U

**Brief Introduction:** CM-0906U is module for CAT5 series, it is used for connecting KVM to USB server, transmitting distance is up to 150m.

## Specifications

Model		KC2132i	
Direct computer connections		32	
Max computer connections		1024	
Port selection		Front panel LEDs, OSD menu	
Connector	Console	Keyboard Mouse	2 * USB TYPE A
		Monitor	1-HDB-15 Female(blue)
	KVM port (RJ-45)		32
	Upgrading switch		1* RJ11 Female
	Power		3-Prong AC socket
Switch	Port selection		32* LEDs
	Reset		1* tuch-button
	Upgrading switch		1* toggle switch
	Power		1* rocker switch
LED Indicator	Online		32 (green)
	Selected		32 (orange)
	Power		1(blue)
	Cascade Display		2*7- Segment (orange)
IP module	Remote connection	access	1 x RJ-45
	Firmware upgrading port		1 x Serial DB9 Pin
	IP settings		DHCP, Bootp, Fixed IP (DDNS supported)
	Event Log		NFS, SMTP, SNMP trap
	Management Interface		Web, Utility, Telnet, Serial port
I/R value		100V~240V AC , 50~60Hz , <1.5A	
Power consumption		10W	
Video Signal		1600x1200@60Hz(50m); 1280x1024@60Hz(100m); DDC2B	
Environment Requirements	Operating Temperature		0~40 °C
	Store Temperature		-20~60°C
	Humidity		0-80%RH,Non-condensing
Physical Features	Material		Metal
	Weight		3.0kg
	Dimension		433mm x 171mm x 44.5mm